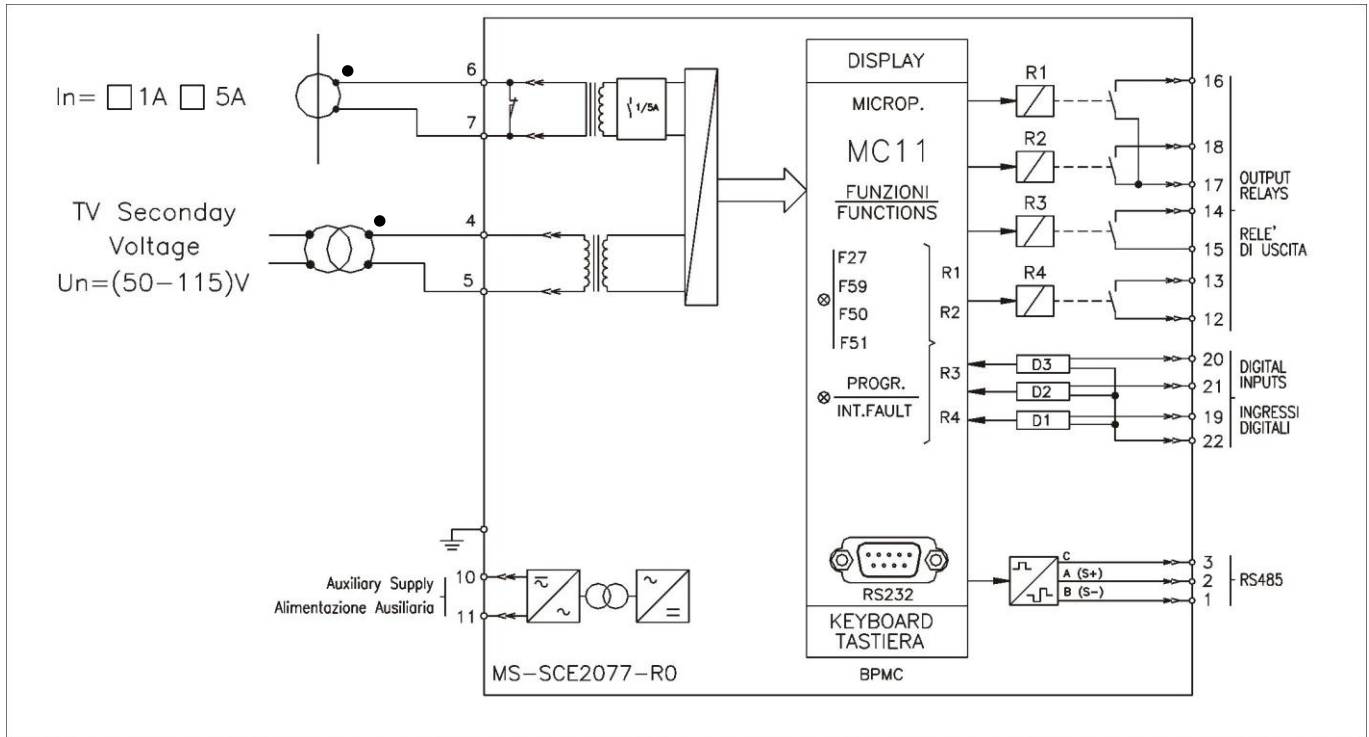


**Schéma de branchement – Connexion diagram****Source auxiliaire – Auxiliary supply**

- [ ] Type 1 : 24...110 Vac – 24...125 Vdc +/-20%  
 [ ] Type 2 : 80...220 Vac – 90...250 Vdc +/-20%

**Montage – Execution**

- [ ] Encastré – Flush mounting  
 [ ] En saillie – Surface mounting  
 [ ] Rack 19" 3U – Standard rack 19"3U

**Calibre nominal – Rated input**

- [ ] In = 1A  
 [ ] In = 5A  
 [X] Un = 50 à/ to 115V

**Demande spéciale – Special request** \_\_\_\_\_**Quantité – Quantity** \_\_\_\_\_