

# NRG SW

**SUPERVISION AND CONTROL SOFTWARE  
DEVELOPED IN WINDOWS  
COMPATIBLE WITH WINDOWS AND SUBSEQUENT 95/98/ME/2000/XP/VISTA**

## DESCRIPTION

Supervision and control software type NRG for managing from a PC, of the data generated from the analyser EMA series, and insulation monitors HRI-R40 series. The software is very intuitive and simple to use.

Its main characteristics and sample of visualisation are show in table below.



## OPERATIONS

For proper utilization, it requires onto your hard-drive. Before installing, be sure 10 Mbytes of free memory.

For proper utilization, it requires Excel 97 or upper installed on your Pc. If Excel 97 is not installed, user have to save data only in TXT.

## SCREENSHOTS



Management of the connected instrument's SETUP Numeric and graphic visualisation of the varius line parameters



Visualisation of the wave form and trends of the various measures

Memorising of the various line parameters

View of the harmonic components of the voltage and the current up to the 31st



## INFORMATIONS FOR ORDERS

	NRG-2	NRG-4	NRG-8	NRG-16	NRG-32	NRG-64	NRG-128
<b>Software-NRG</b>							
2 Instruments							
4 Instruments							
8 Instruments							
16 Instruments							
32 Instruments							
64 Instruments							
128 Instruments							

## CHARACTERISTICS

Application	NRG Software package is a 32-bit application
Compability	Windows 95 / 98 / ME / 2000 / XP
Instruments managing	EMA series, EMM and EMC series, HRI-R40 series, ELM series, EMT series
Format of save data	CSV file, Excel file o TXT file
Setup the instruments	Possibility of management of the connected instrument's SETUP
Instruments programming	Complete programming of registers
Alarms	Alarm management and registering of alarm
Maximum and minimum value	View and savethe maximum and minimum values of measures
Logger	Event data logger
Visualization	Numeric and visualisation of the variousline parameters
Wave forms	Visualisation of the wave forms of the various line parameters
Line parameter managing	Voltage, current, frequency, power factor, active power, reactive power, apparent power, positive and negative Energiess, active and reactive Energiess,eventual evidence of the alarm values.
Trends	Visualisation of the trends of the various measures
Harmonic component	Numeric and graphics viuw of the harmonic components of voltage and current up to the 31st
Records	Graphics records
Energy consumption	Visualisation and the energy consumption subdivided in time bands
Memorising	Memorising of the varius parameters (voltage, current, frequency, power factor, active , reactive, and apparent powers, positive and negative, active and reactive Energiess
Digital Inputs	Visualisation of the status of the digital inputs
Digital Outputs	Visualisation of the status of the digital outputs (useable for alarms control and management of loads, pulse re-emission, etc.)
Download	Download of the measures data from the memory
Network connection	Network connection tools
Data conversion	Data conversion of the electronic sheets
Timeout instruments	Setting up the value (msec) of the timeout
Auto-recognized of instruments	Set automatically the type of instruments

# SW NRG OPTION

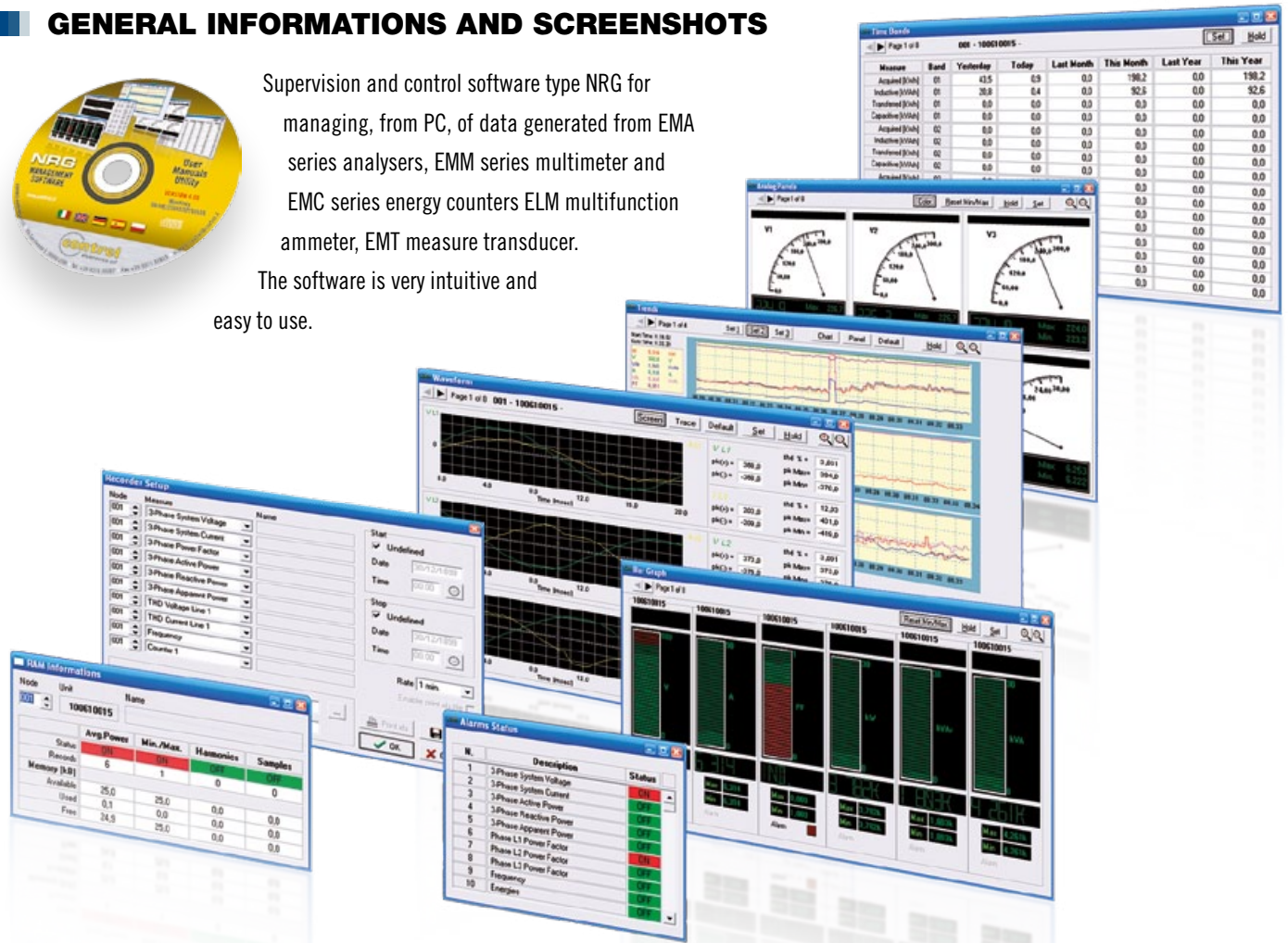
DEVELOPED FOR WINDOWS ENVIRONMENT  
COMPATIBLE WITH WINDOWS AND SUBSEQUENT 95/98/ME/2000/XP/VISTA

## GENERAL INFORMATIONS AND SCREENSHOTS



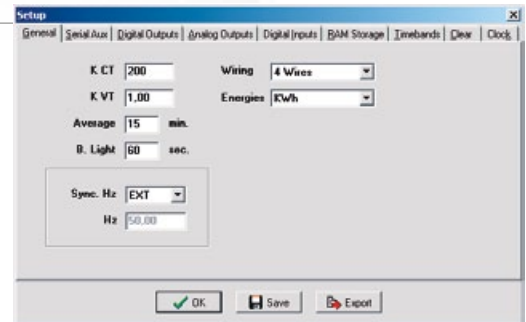
Supervision and control software type NRG for managing, from PC, of data generated from EMA series analysers, EMM series multimeter and EMC series energy counters ELM multifunction ammeter, EMT measure transducer.

The software is very intuitive and easy to use.

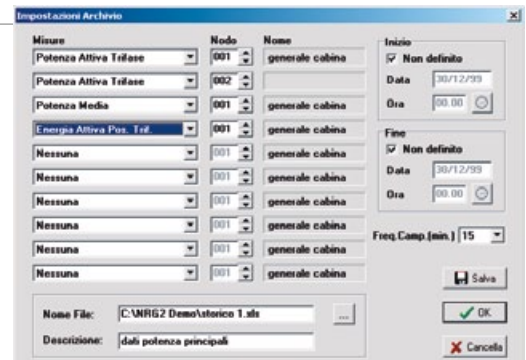


Its main characteristics and visualisation's examples are shown below:

- 1 - Capability of SETUP management of connected instruments



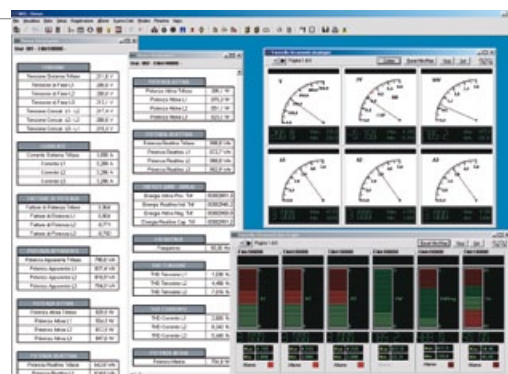
- 2 - Complete programming, recording and alarms management
- 2a - Minimum and maximum alarm recording and events data logger



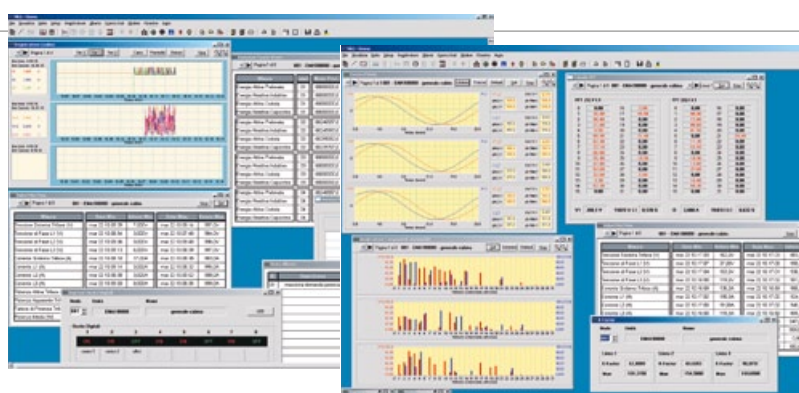


DEVELOPED FOR WINDOWS ENVIRONMENT  
COMPATIBLE WITH WINDOWS AND SUBSEQUENT 95/98/ME/2000/XP/VISTA

- **3** - Numeric and graphic visualisation (for analogical and digital instruments and graphic bar) of various line parameters (voltage, current, frequency; power factor; active, reactive, apparent, positive and negative power) with eventual evidence of alarm values.



- **4** - Visualisation of wave forms and trends of various measured parameters



- **4a** - Numeric and graphic visualisation of the harmonic components of voltage and current up to 31st

- **4b** - Graphic records

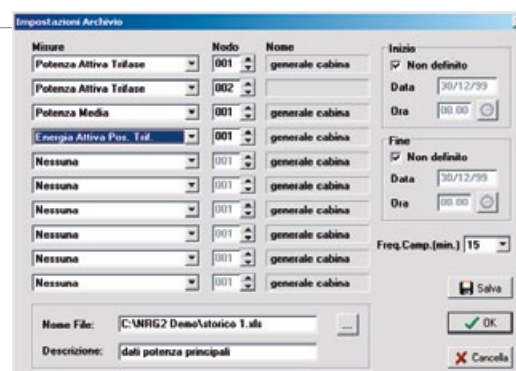
- **5** - Graphic visualisation of voltage and current wave forms

- **6** - Visualisation of energy consumption subdivided in time bands



- **7** - Memorising of different network's parameters (voltage, current, frequency, factor of power, active, reactive and apparent power, active, reactive, positive and negative energy).

- **7a** - Download of measure's data from instrument's memory



- **8** - Visualisation of digital outputs status (useable for alarms, loads managing and control, re-emission pulses and so on)

- **8a** - Network connection tool

- **8b** - Data conversion for electronics sheets